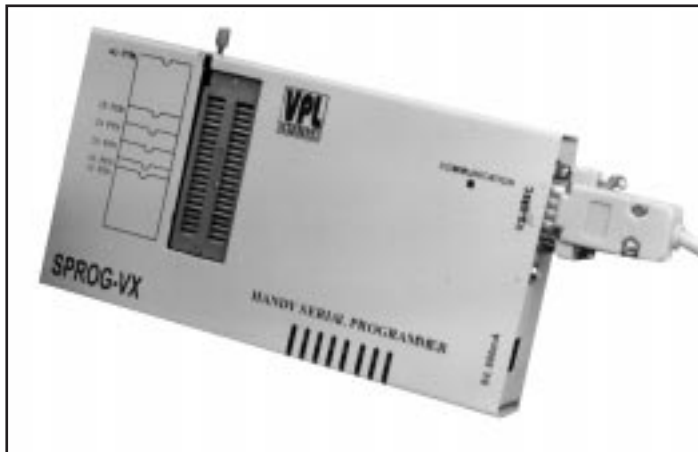


SPROG-VX/N/E/VXF

Advanced Handy Serial Programmer



FEATURES

- Can be **connected** to IBM PC, NOTE-BOOK, HAND BOOK through **RS-232C port**
- Can program **EPROM, EEPROM, FLASH MEMORY & MICRO-CONTROLLERS**
- Programming voltage and algorithm selectable by software
- FLASH/EEPROM** erased by software commands
- Supply voltage: +9V, 500mA from battery emulator
- Device update possible through internet

DEVICE SUPPORT:

EPROM:includingWINBOND, SST etc. (WITHOUTWINDOW)

2716(25V) 2716(21V) 2732(21V) 2764(12.5V) 27C64(12.5V)
 CY7C264(12.5V) WS157C49C 27128(21V) 27128(12.5V)
 27C128(12.5V) 27256(21V) 27256(12.5V) 27C256(12.5V)
 27512(21V) 27512(12.5V) 27C512(12.5V) 27C010 27C010(21)
 ST27C010 27C020 HT27C020 27C040 27C080 W27E257 W27E512
 W27E010 W27C010 W27E020 W27C020 SST27SF256 SST27SF512
 SST27SF010 SST27SF020 PT28C020 MX27C2000

EEPROM:

2817A 28C17 2864 28C64 28C65 2864A DS1225AD
 DS1230Y 52B33H 28256 28C256 28C010 28C010 28C020 28C040
 AK6420A AK6440A AK6480A 82S123 AM27S19 AT24C02 AT24C04
 AT24C08 AT24C16 AT24C32 AT24C64 AT24C128 AT24C256
 AT24C512 ST93C06 AT93C46 AT93C56 AT93C66

FLASH MEMORY: includingWINBOND, SST,ATMEL

W29EE011 W29EE020 AT29C256 AT29LV256 AT29C257 AT29C512
 AT29LV512 AT29C010 AT29C010A AT29C020 W29C020 AT29C040A
 ST29F040 AM29F040B V29C51002T MX26C2000B W49F002A
 SST49LF002A LST28002P AST29F002 EN29F002S AT49F002
 SST39SF512 SST39SF010 SST39SF020 SST29EE512 SST29EE010
 SST29EE020 28F256 28F512 28F010 28F020 INTEL82802AA
 INTEL82802AB INTEL82802AC

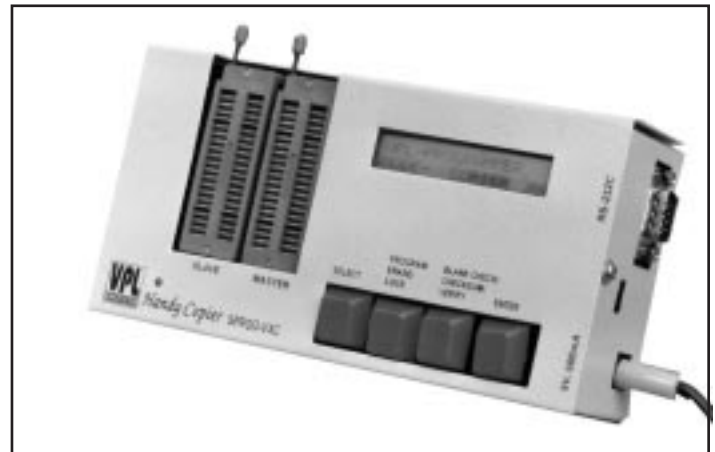
MICROCONTROLLER:includingINTEL, ATMEL, PHILIPS, WINBONDetc.

i8751H i8752H i8751BH i8752BH i87C51 i87C52 i87C54 i87C58
 i87C51FA i87C51FB i87C51FC P87C51 P87C52 P87C54 P87C58
 P87C51FA P87C51FB P87C51FC P87C451 P87C524 P87C528 P87C552

Note: Specifications can be changed and added without notice in our constant efforts for improvement.

SPROG-VXC/VXCE

Handy Copier



FEATURES

- Copying** facility from **MASTER TO SLAVE.**
- User friendly menu driven software to avail facility to interface with PC.
- 16 x 2 LCD Display** (backlit)
- 4 keys to perform **Program, Verify, Blank Check, Lock, Erase, Checksum & Select.**
- Compact size.
- Supply voltage: +9V, 600mA from battery emulator
- Device update possible through internet

DEVICE SUPPORT:

- SPROG-VXC** supports all devices of **SPROG-VX.**
- SPROG-VXCE** Supports all **E/EPROMs & Flash Memories** of **SPROG-VX**

P87C592 P87C652 P87C654 P89C51UB P89C52UB P89C54UB
 P89C58UB P89C58B P89C51RA P89C51RB P89C51RC P89C51RD
 P89C51RD2 S87C51 S87C52 S87C51FA S87C51FB S87C51FC
 S87C451 S87C524 S87C528 S87C552 S87C592 S87C652 S87C654
 SST89F54 SST89F58 AT89C51 AT89S51 AT89LS51 AT87F51 AT89C52
 AT89S52 AT89LS52 AT89C51RC AT87F52 AT89C55 AT89C55WD
 AT89S8252 AT89LV51 AT89LV52 ATtiny15L ATtiny11L AT89C1051*
 AT89C2051* AT89C4051* AT90S1200 W78E51 W78E52 W78E54
 W78E58 PIC16C54 PIC16C711 PIC16C84 PIC16F84 PIC16C72
 PIC16C72A PIC16F72 PIC16F72A PIC16C73 PIC16C73A PIC16F73
 PIC16F73A PIC16F873 PIC16F876 PIC16F877 GMS97C1051*
 GMS97C2051* GMS97C51 GMS97C52

PLD:**

ATF16V8B(>98) ATF16V8B ATF16V8BL ATF20V8B ATF20V8BL
 ATF22V10B ATF22V10BL

* Separate adapter required

** Universal/separate adapter for all/each PLDs available

VPL-EGANG8/ μ GANG EPROM/Universal Gang Programmer



VPL-EGANG8 is one of the most powerful and versatile **Gang copier** as well as **Serial Programmer** convenient and efficient serial port connection to any IBM compatible PC/AT, Note Book or Hand Book. It supports programming for EPROMS, EEPROMS, FLASH EPROMS & MICROCONTROLLERS in Serial Mode. In Copier Mode.

FEATURES

- Copying facility from master to eight slaves at a time.
- 16 x 2 LCD Display.**
- 4 keys to perform program, Verify, Blank CCheck, Auto, **Erase**, Checksum & Select in Copier Mode.
- Can be connected to IBMPC, NOTE-BOOK, HAND-BOOK through RS-232C port.
- Can program eprom, eeprom, flash memory & microcontrollers IN SERIAL mode.
- User-friendly menu driven software to interface with PC.
- In-built Power Supply.

DEVICE SUPPORT (μ GANG):

EPROM:including WINBOND, SST etc. (WITHOUT WINDOW)

2716(25V) 2716(21V) 2732(21V) 2764(12.5V) 27C64(12.5V)
 CY7C264(12.5V) WSI57C49C 27128(21V) 27128(12.5V)
 27C128(12.5V) 27256(21V) 27256(12.5V) 27C256(12.5V)
 27512(21V) 27512(12.5V) 27C512(12.5V) 27C010 27C010(21)
 ST27C010 27C020 HT27C020 27C040 27C080 W27E257 W27E512
 W27E010 W27C010 W27E020 W27C020 SST27SF256 SST27SF512
 SST27SF010 SST27SF020 PT28C020 MX27C2000

EEPROM:

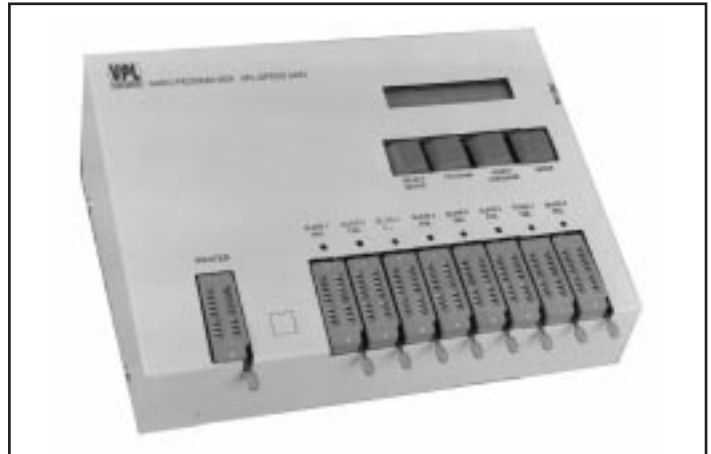
2817A 28C17 2864 28C64 28C65 2864A DS1225AD
 DS1230Y 52B33H 28256 28C256 28C010 28C010 28C020 28C040
 AK6420A AK6440A AK6480A 82S123 AM27S19 AT24C02 AT24C04
 AT24C08 AT24C16 AT24C32 AT24C64 AT24C128 AT24C256
 AT24C512 ST93C06 AT93C46 AT93C56 AT93C66

FLASH MEMORY:including WINBOND, SST, ATMEL

W29EE011 W29EE020 AT29C256 AT29LV256 AT29C257 AT29C512
 AT29LV512 AT29C010 AT29C010A AT29C020 W29C020 AT29C040A
 ST29F040 AM29F040B V29C51002T MX26C2000B W49F002A
 SST49LF002A LST28002P AST29F002 EN29F002S AT49F002
 SST39SF512 SST39SF010 SST39SF020 SST29EE512 SST29EE010

Note: Specifications can be changed and added without notice in our constant efforts for improvement.

VPL-GPROG Gang Programmer for 24/93 Series



VPL-GPROG is one of the most powerful and versatile **Gang copier** convenient to copy any of the **Serial EEPROMS of 24 & 93 series**. It is a best product recommended for PC Monitor, Television, EPABX manufacturers & Production/Serviceing people.

Total 9 nos. (1 master + 8 slaves) of 20 Pin ZIF sockets are provided for bulk copying. **Eight ICs can be copied at a time**. The backlighted LCD Display & 4 key switches make the operation easy. It has in-built power supply and a fuse is provided to safeguard the instrument from overvoltage.

SPECIFICATIONS

- Serial EEPROMS of 24/93 series** currently supported.
- Total 9 nos. (**1 master + 8 slaves**) of **20 Pin ZIF** sockets provided.
- 16 x 2 LCD Display.**
- 4 keys to perform **Device Selection, Program, Verify, Checksum & Selection.**
- In-built Power Supply.
- Power Consumption: +5V, 600mA

SST29EE020 28F256 28F512 28F010 28F020 INTEL82802AA
 INTEL82802AB INTEL82802AC

MICROCONTROLLER:including INTEL, ATMEL, PHILIPS, WINBOND etc.

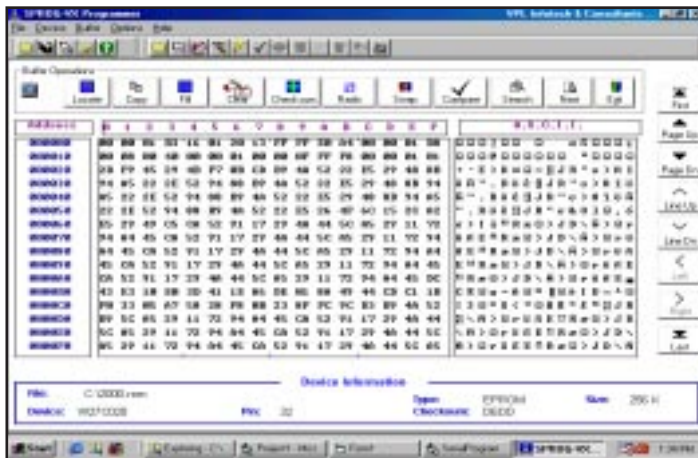
i8751H i8752H i8751BH i8752BH i87C51 i87C52 i87C54 i87C58
 i87C51FA i87C51FB i87C51FC P87C51 P87C52 P87C54 P87C58
 P87C51FA P87C51FB P87C51FC P87C451 P87C524 P87C528 P87C552
 P87C592 P87C652 P87C654 P89C51UB P89C52UB P89C54UB
 P89C58UB P89C58B P89C51RA P89C51RB P89C51RC P89C51RD
 P89C51RD2 S87C51 S87C52 S87C51FA S87C51FB S87C51FC
 S87C451 S87C524 S87C528 S87C552 S87C592 S87C652 S87C654
 SST89F54 SST89F58 AT89C51 AT89S51 AT89LS51 AT87F51 AT89C52
 AT89S52 AT89LS52 AT89C51RC AT87F52 AT89C55 AT89C55WD
 AT89S8252 AT89LV51 AT89LV52 ATtiny15L ATtiny11L AT89C1051
 AT89C2051 AT89C4051 AT90S1200 W78E51 W78E52 W78E54
 W78E58

DEVICE SUPPORT (EGANG8):

- Supports all E/EPROMS & Flash Memories of μ GANG.**

VPL-PPROG

Parallel Port EPROM Programmer



AST29F002 EN29F002S AT49F002 SST39SF512 SST39SF010
 SST39SF020 SST29EE512 SST29EE010 SST29EE020 28F256
 28F512 28F010 28F020 INTEL82802AA INTEL82802AB
 INTEL82802AC

MICROCONTROLLER:includingINTEL,ATMEL,PHILIPS,WINBONDetc.

i8751H i8752H i8751BH i8752BH i87C51 i87C52 i87C54
 i87C58 i87C51FA i87C51FB i87C51FC P87C51 P87C52
 P87C54 P87C58 P87C51FA P87C51FB P87C51FC P87C451
 P87C524 P87C528 P87C552 P87C592 P87C652 P87C654
 P89C51UB P89C52UB P89C54UB P89C58UB P89C58B
 P89C51RA P89C51RB P89C51RC P89C51RD P89C51RD2
 S87C51 S87C52 S87C51FA S87C51FB S87C51FC
 S87C451 S87C524 S87C528 S87C552 S87C592 S87C652
 S87C654 SST89F54 SST89F58 AT89C51 AT89S51 AT89LS51
 AT87F51 AT89C52 AT89S52 AT89LS52 AT89C51RC AT87F52
 AT89C55 AT89C55WD AT89S8252 AT89LV51 AT89LV52
 ATtiny15L ATtiny11L AT89C1051* AT89C2051* AT89C4051*
 AT90S1200 W78E51 W78E52 W78E54 W78E58 PIC16C54
 PIC16C711 PIC16C84 PIC16F84 PIC16C72 PIC16C72A
 PIC16F72 PIC16F72A PIC16C73 PIC16C73A PIC16F73
 PIC16F73A PIC16F873 PIC16F876 PIC16F877 GMS97C1051*
 GMS97C2051* GMS97C51 GMS97C52

PLD:**

ATF16V8B(>'98) ATF16V8B ATF16V8BL ATF20V8B ATF20V8BL
 ATF22V10B ATF22V10BL

FEATURES

- PC interface through Printer Port
- Can program **EPROM, EEPROM, FLASH MEMORY, MICRO-CONTROLLERS, PICs&PLDs.**
- Programming voltage and algorithm selectable by software
- FLASH/EEPROM** erased by software commands
- High programming speed
- Supports Windows 9x
- Connect to PC (desktop and notebook) via printer port
- Test standard logic devices and SRAM
- Supply voltage: +9V, 500mA from battery emulator
- Device update possible through internet

DEVICE SUPPORT:

EPROM:includingWINBOND, SST etc. (WITHOUT WINDOW)

2716(25V) 2716(21V) 2732(21V) 2764(12.5V) 27C64(12.5V)
 CY7C264(12.5V) WSI57C49C 27128(21V) 27128(12.5V)
 27C128(12.5V) 27256(21V) 27256(12.5V) 27C256(12.5V)
 27512(21V) 27512(12.5V) 27C512(12.5V) 27C010 27C010(21)
 ST27C010 27C020 HT27C020 27C040 27C080 W27E257
 W27E512 W27E010 W27C010 W27E020 W27C020
 SST27SF256 SST27SF512 SST27SF010 SST27SF020
 PT28C020 MX27C2000

EEPROM:

2817A 28C17 2864 28C64 28C65 2864A DS1225AD
 DS1230Y 52B33H 28256 28C256 28C010 28C010 28C020
 28C040 AK6420A AK6440A AK6480A 82S123 AM27S19
 AT24C02 AT24C04 AT24C08 AT24C16 AT24C32 AT24C64
 AT24C128 AT24C256 AT24C512 ST93C06 AT93C46 AT93C56
 AT93C66

FLASH MEMORY:includingWINBOND, SST,ATMEL

W29EE011 W29EE020 AT29C256 AT29LV256 AT29C257
 AT29C512 AT29LV512 AT29C010 AT29C010A AT29C020
 W29C020 AT29C040A ST29F040 AM29F040B V29C51002T
 MX26C2000B W49F002A SST49LF002A LST28002P

**EE-I
 EPROM Eraser**



SPECIFICATIONS

- 6"/9"** Ultra Violet Tube.
- Exactly 2537°A wave length for reliable erasing.
- Built in spring loaded mechanical timer with auto rewinding for setting time **0-30/60 minutes.**
- Auto shut OFF after predetermined time, selectable by the timer.
- Safety lock for complete safety against human exposure.
- 8 to 10 EPROMs can be erased at a time.
- Housed in an attractive mettalic cabinet.

Note: Specifications are changed and added without notice in our constant efforts for improvement.